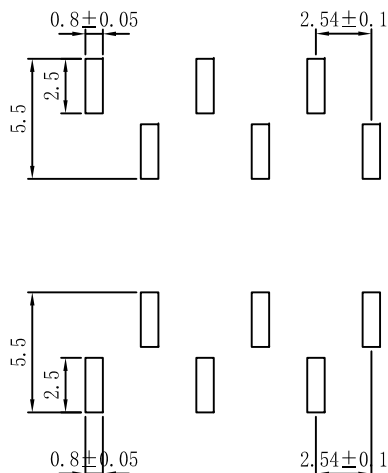
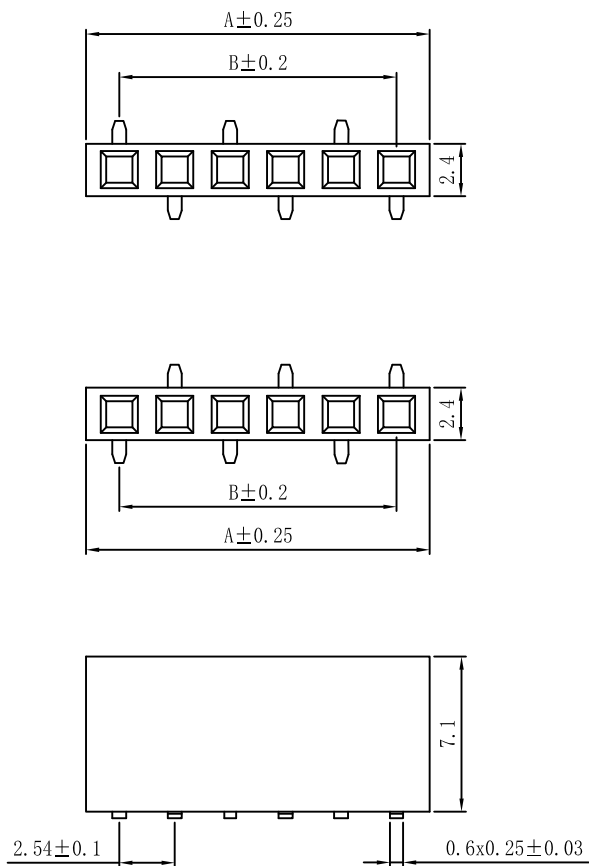
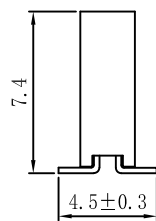


RoHS

更改 KEY	变更内容 CHANGE CONTENT	原因 REASON	变更日期 DATE
A0			



P.C.B LAYOUT



技术要求:  
Technical requirement  
一. 电气性能:  
electrical performance  
1-1. 额定电流: 3A AC DC.  
rated current: 3A AC DC.  
1-2. 接触电阻:  $\leq 20m\Omega$   
Contact resistance:  $\leq 20m\Omega$   
1-3. 绝缘电阻:  $\geq 1000M\Omega$   
Insulation resistance:  $\geq 1000M\Omega$   
1-4. 耐压: 550V AC/Minute  
withstand voltage: 550V AC/Minute  
二. 物理特性:  
Physical characteristics  
2-1. 环境温度:  $-25^{\circ}C \sim 105^{\circ}C$   
environmental temperature:  $-25^{\circ}C \sim 105^{\circ}C$   
2-2. 焊接温度:  $+260^{\circ}C$ , 10s max  
welding temperature:  $+260^{\circ}C$ , 10s max  
三. 材质:  
Material  
3-1. 塑胶: PA6T(Black) UL94V-0  
plastic: PA6T(Black) UL94V-0  
3-2. 插针: 磷铜/镀金  
pin: Phosphor Bronze/Gold plated

PIN	A	B
1x2A	5.58	2.54
1x3A	8.12	5.08
1x4A	10.66	7.62
1x5A	13.20	10.16
1x6A	15.74	12.70
1x7A	18.28	15.24
1x8A	20.82	17.78
1x9A	23.36	20.32
1x10A	25.90	22.86
1x11A	28.44	25.40
1x12A	30.98	27.94
1x13A	33.52	30.48
1x14A	36.06	33.02
1x15A	38.60	35.56
1x16A	41.14	38.10
1x17A	43.68	40.64
1x18A	46.22	43.18
1x19A	48.76	45.72
1x20A	51.30	48.26
1x21A	53.84	50.80
1x22A	56.38	53.34
1x23A	58.92	55.88
1x24A	61.46	58.42
1x25A	64.00	60.96
1x26A	66.54	63.50
1x27A	69.08	66.04
1x28A	71.62	68.58
1x29A	74.16	71.12
1x30A	76.70	73.66
1x31A	79.24	76.20
1x32A	81.78	78.74
1x33A	84.32	81.28
1x34A	86.86	83.82
1x35A	89.40	86.36
1x36A	91.94	88.90
1x37A	94.48	91.44
1x38A	97.02	93.98
1x39A	99.56	96.52
1x40A	102.10	99.06

3	包装	<input type="checkbox"/> 袋装 <input type="checkbox"/> 管装 <input type="checkbox"/> 卷装 <input checked="" type="checkbox"/> 盒装	1	PCS
2	塑胶	PH2.54*7.1 1*nP PA6T料	1	PCS
1	端子	2.54X7.1 U型 SMT W7.3磷铜镀金G/F	/	PCS
ITEM	PART NAME	DESCRIPTION	QUA'Y	UNIT

	单位 UNIT	mm	深圳市泰华电子有限公司 <b>TaiHua Electronics Co., Ltd</b>		
	比例 SCALE				
x. ±0.5	x.*±	核准:	版本: A0	产品名称 Production name	PH2.54x7.1mm 排母 G/F 立贴 带柱
.x ±0.30	.x *±	审核:	页次: 1/1	产品料号 Product No	
.xx ±0.20	.xx *±	制图: 封文辉	日期:	客户料号 Client No	
.xxx ±0.005	.xxx *±	DRAWN BY			